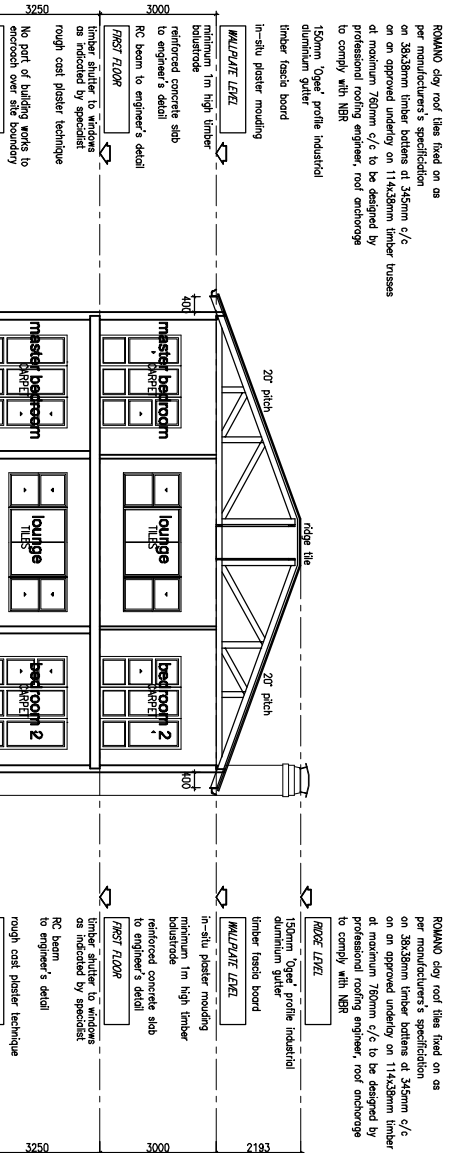
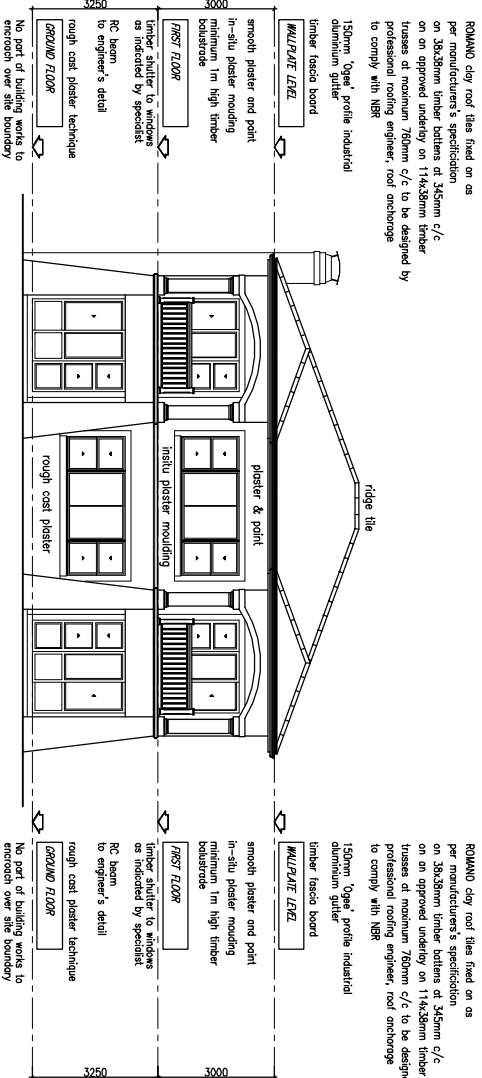


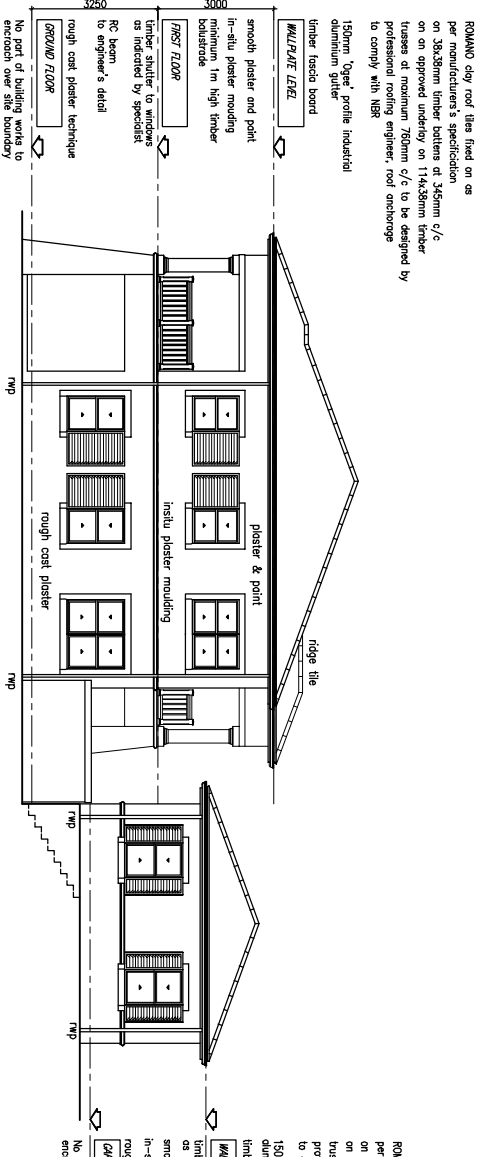
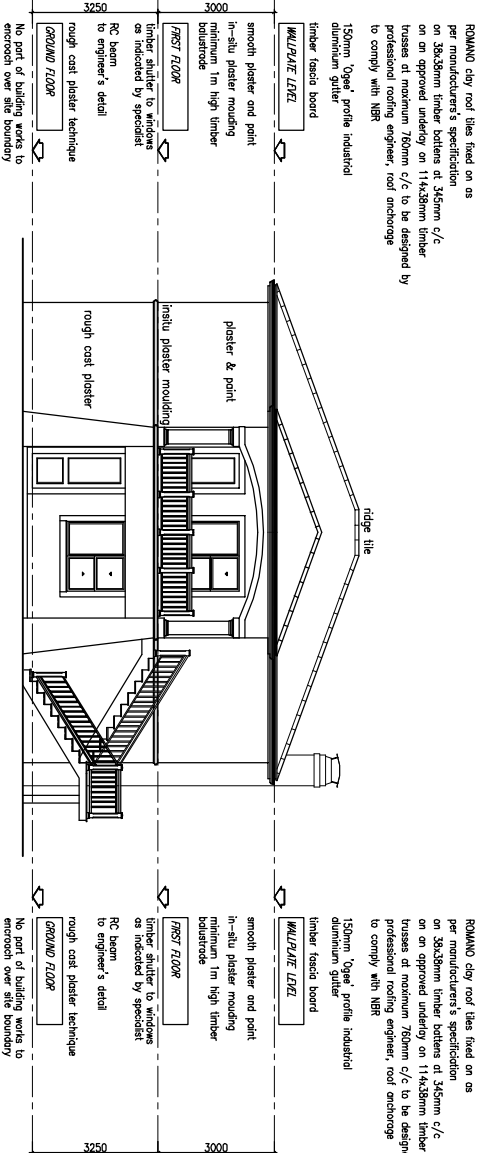
FRONT ELEVATION GARAGE ELEVATION
SCALE 1:100



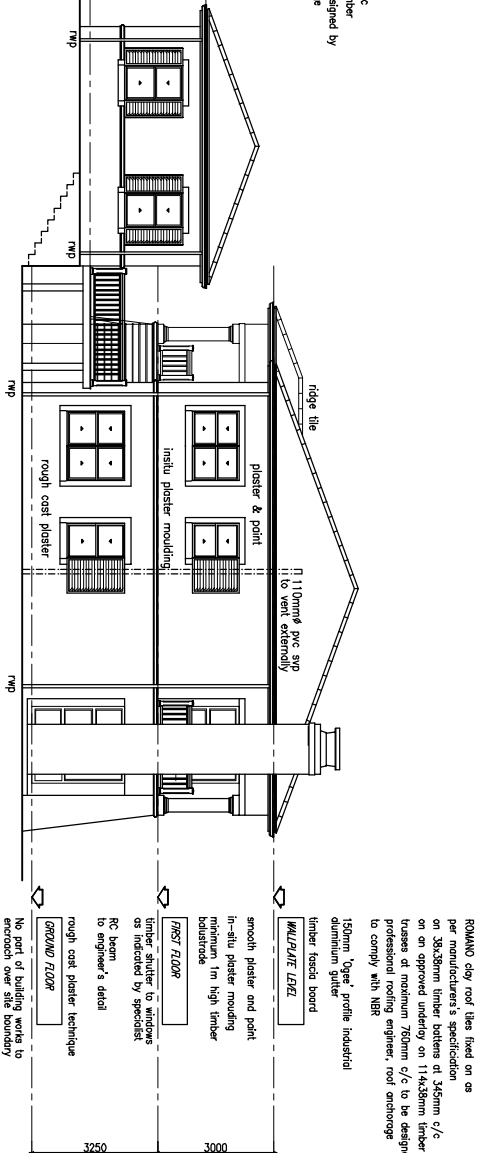
SECTION A-A
SCALE 1:100



REAR ELEVATION
SCALE 1:100



SIDE ELEVATION
SCALE 1:100



SIDE ELEVATION
SCALE 1:100

ROMANO clay roof tiles fixed on as per manufacturer's specification on 38x38mm timber battens at 345mm c/c on an approved underlay on 114x38mm timber trusses at maximum 760mm c/c to be designed by professional roofing engineer, roof anchorage to comply with NBR 150mm 'Open' profile industrial aluminium gutter timber fascia board

150mm 'Open' profile industrial aluminium gutter timber fascia board

MULTI/PUR LEVEL

in-situ plaster moulding minimum 1m high timber battens reinforced concrete slab to engineer's detail

700ST FLOOR

timber shutter to windows as indicated by specialist

RC beam to engineer's detail

rough cast plaster technique

GROUND FLOOR

No part of building works to encroach over site boundary

reinforced concrete surface bed on 50mm thick sand well trimmed and powdered soil to engineer's detail

reinforced concrete ground beams and pile foundations to engineer's detail

ROMANO clay roof tiles fixed on as per manufacturer's specification on 38x38mm timber battens at 345mm c/c on an approved underlay on 114x38mm timber trusses at maximum 760mm c/c to be designed by professional roofing engineer, roof anchorage to comply with NBR 150mm 'Open' profile industrial aluminium gutter timber fascia board

150mm 'Open' profile industrial aluminium gutter timber fascia board

MULTI/PUR LEVEL

smooth plaster and point in-situ plaster moulding minimum 1m high timber battens

700ST FLOOR

timber shutter to windows as indicated by specialist

RC beam to engineer's detail

rough cast plaster technique

GROUND FLOOR

No part of building works to encroach over site boundary

ROMANO clay roof tiles fixed on as per manufacturer's specification on 38x38mm timber battens at 345mm c/c on an approved underlay on 114x38mm timber trusses at maximum 760mm c/c to be designed by professional roofing engineer, roof anchorage to comply with NBR 150mm 'Open' profile industrial aluminium gutter timber fascia board

150mm 'Open' profile industrial aluminium gutter timber fascia board

MULTI/PUR LEVEL

smooth plaster and point in-situ plaster moulding minimum 1m high timber battens

700ST FLOOR

timber shutter to windows as indicated by specialist

RC beam to engineer's detail

rough cast plaster technique

GROUND FLOOR

No part of building works to encroach over site boundary

ROMANO clay roof tiles fixed on as per manufacturer's specification on 38x38mm timber battens at 345mm c/c on an approved underlay on 114x38mm timber trusses at maximum 760mm c/c to be designed by professional roofing engineer, roof anchorage to comply with NBR 150mm 'Open' profile industrial aluminium gutter timber fascia board

150mm 'Open' profile industrial aluminium gutter timber fascia board

MULTI/PUR LEVEL

smooth plaster and point in-situ plaster moulding minimum 1m high timber battens

700ST FLOOR

timber shutter to windows as indicated by specialist

RC beam to engineer's detail

rough cast plaster technique

GROUND FLOOR

No part of building works to encroach over site boundary

ROMANO clay roof tiles fixed on as per manufacturer's specification on 38x38mm timber battens at 345mm c/c on an approved underlay on 114x38mm timber trusses at maximum 760mm c/c to be designed by professional roofing engineer, roof anchorage to comply with NBR 150mm 'Open' profile industrial aluminium gutter timber fascia board

150mm 'Open' profile industrial aluminium gutter timber fascia board

MULTI/PUR LEVEL

smooth plaster and point in-situ plaster moulding minimum 1m high timber battens

700ST FLOOR

timber shutter to windows as indicated by specialist

RC beam to engineer's detail

rough cast plaster technique

GROUND FLOOR

No part of building works to encroach over site boundary

SINGLE UNIT BLOCK A

GENERAL NOTES :

POURED DIMENSIONS TO TAKE PRECEDENCE OVER SCALES

ALL WORK TO BE CARRIED OUT STRICTLY IN ACCORDANCE WITH NBR & LOCAL AUTHORITY BYE-LAWS.

NO PORTION OF PROPOSED WORK TO ENDOURCH ON ADJACENT PROPERTIES.

ANY DISCREPANCIES TO BE REPORTED IMMEDIATELY TO THE ARCHITECT PRIOR TO THE COMMENCEMENT OF ANY WORK.

THIS DRAWING IS COPYRIGHT AND REMAINS WITH THE ARCHITECT.

OWNER'S SIGNATURE

ARCHITECT'S SIGNATURE



PHONE: (031) 522 8877 FAX: (031) 522 8188
BULWING SA, GLENKELSA PARK, 10 FLAMBERS DRIVE, MOUNT EDGEWORTH
PO BOX 98, HATFIELD THE SEAS, 488
E-MAIL ADDRESS: INFO@SAGRADA.CO.NZ

CLIENT:
Palmarino

PROJECT:
Development on
ERF 372, MTWALUME

DRAWING STAGE:
SUBMISSION

DRAWING TITLE:
SECTION & ELEVATIONS

SCALE: 1:100	DATE: 21/04/06
DRAWN: JIM	JOB NO: 615/06
QA CHECKER:	DATE CHECKED:
SI CHECKER:	DATE CHECKED:
DRAWING NUMBER: S/615/06/03	REVISION NO: 0